

# RainSky E

How to make rain  
A manual

**△ ATTENTION: Please make sure that you only  
operate your RainSky E as specified in this manual.**

## Welcome

*Welcome to the new rainy season in the bathroom. Because the shower you take with RainSky E involves all of your senses. The architectonic transposition of a new and self-aware lifestyle that searches for opportunities to harmonise mind and body. For the first time water, mist, light and fragrance are combined in scenarios that take nature's moods as their model. Go on, spoil yourself.*

### **WATER**

As in nature herself, it is only the force of gravity that makes the water fall and over a large area as well, so that your entire body is covered in rain. The different rain modes enhance your immersion into the rain experience. A rather special feature are the characteristic final raindrops at the end of every shower – a further homage to nature herself.

### **LIGHT**

The integrated light strips ensure matching mood colour – from the dawn of the day to sunny impressions through to dusk. Standing behind the radiant curtain of rain during the scenarios, you quickly feel the effect of nature's colours.

### **FRAGRANCE**

Sensual stimuli spoil you and create a unique feeling of wellbeing as you experience the different fragrances. For fragrances penetrate deep within us and touch our senses and our souls. They put our bodies and our minds on full alert or peacefully soothe them both.

1

## Restart

*This scenario gently revives your life force energy. You are enveloped in a pleasantly warm shower of rain that gradually loses heat. The agreeably cool impact of the mist against your skin stimulates your circulation. You become more awake and stabilised. Then the temperature increases again.*

Restart begins with gentle rain emanating from the rain curtain. After a delay, the body spray and the head spray join in. The starting temperature of 38° C slowly falls to about 32° C, the rain stops and three cold-water mist sprays begin their work. Then the temperature rises again, the head and body sprays come on and once again hand over again to the rain curtain before Restart concludes with those final raindrops. The mood colour develops in parallel to the rain mode choreography, passing from shades of blue and violet to a sunny orange red. During the mist period, blue briefly cools the colour climate to match the water temperature. The scenario is accompanied by an invigoratingly fresh, aromatic fragrance.

2

## Reload

*A light shower that is simultaneously relaxing and stimulating. In a rhythmic alternation similar to Kneipp therapy, your body is first warmed and then slightly cooled. You are recharged and given new energy.*

Reload first starts with the head spray and then there is a delay before the powerful body spray joins in. The temperature slowly falls from 38° C to about 32° C, at which point the head and body sprays switch off, one after the other and you get your first kick of freshness from a cool burst of mist. Then your body is enveloped in pleasant warmth by the rain curtain and the body spray, before the cycle is repeated twice more, from the beginning. And all the time, vital shades of orange and yellow alternate to provide matching mood colour. During the mist cycles, the colour temperature falls briefly, along with that of the water. The scenario is accompanied by a balancing fragrance, that invigorates or inspires to match the current or prevailing mood.

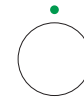
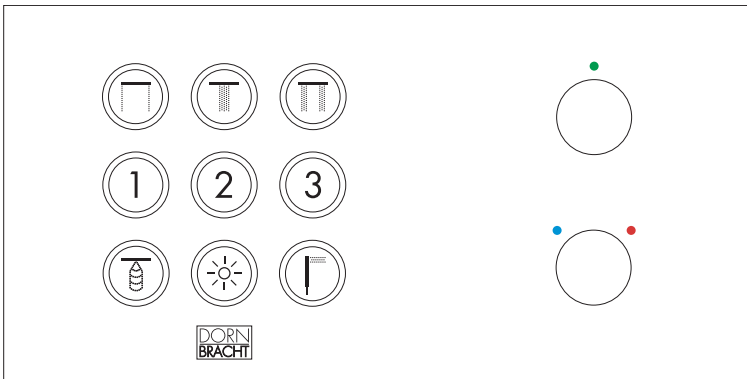
3

## Return

*The return to yourself. A good shower makes everyday life drop away. Your body is then enveloped in warming water. Your mind follows suit. A constant rhythm ensures new balance.*

With Return, all three rain modes are active right from the start. The rain curtain, body and head sprays envelop your body in warm water from all sides. The temperatures are deliberately varied between 36–38° C the whole time, to emphasize that slowing-down, peaceful feeling. There are no cool mist cycles. The colours develop from an energetically warm orange to a cool, peaceful blue violet. Rain mode activity alters every time the colour changes. Sometimes they are combined, sometimes the rain curtain and the body sprays act alone. The conclusion is a moment of calm, with the last drops. The scenario is accompanied by an earthy, calming fragrance.

## User function



## 1. Volume

### 1.1 Turning

The volume, that is to say the amount of water, can be adjusted individually for the rain curtain, the head spray, the body spray and the separate hand shower by turning the volume button.

- Turn clockwise to increase the amount of water up to a preset maximum.
- Turn anti-clockwise to reduce the amount of water down to a preset minimum.

During the scenarios, you can adjust the volume round an average setting.

### 1.2 Pressing

When you press the volume button, there is a three second delay before the rain curtain, head and body sprays all run a brief draining phase to ensure that any cold-water remaining in the pipes drains away.

- The green LED flashes.

As soon as the water in the pipes reaches the required initial temperature of 38° C, the three rain modes automatically switch off. The RainSky E is now ready for action.

- The green LED is permanently lit.



## 2. Temperature

The temperatures of the rain curtain, head spray, body spray and separate hand shower can be set individually by turning the temperature button.

- Turn clockwise to increase the temperature.
- Turn anti-clockwise to reduce the temperature.

At the normal setting, the temperature can be adjusted upward to a maximum of 42° C (scald protection). This ensures that the water cannot accidentally be set too hot.

To increase the temperature to over 42° C, the temperature button must be pressed and then released again. Then the temperature button must be pressed and turned simultaneously within three seconds.

**△ ATTENTION: If the safety limit stop of 42° C is exceeded, there is a risk of burning.**

- The blue LED goes out as a warning and the red LED flashes.



## 3. Rain curtain / head spray / body spray

Separate pushbuttons allow the three rain modes to be chosen individually, together and in any combination, independently of the three preset scenarios.

- The blue LED ring lights up around the particular button.

The scenarios, mist sprays and hand shower are then automatically switched off.

The water only starts to flow three seconds after switching on. While the water is heating up to the preset temperature of 38° C, the green LED over the volume button flashes. When the temperature is reached, this LED is permanently lit.

A safety shutdown ensures that the rain curtain is switched off automatically after 60 minutes, the head and body spray after 20 minutes.



## 4. Scenarios

### *1 Restart – 2 Reload – 3 Return*

The three programme pushbuttons 1, 2 and 3 are used to call the three scenarios Restart, Reload and Return. If the RainSky E was previously switched off, you first need to press the volume button to get it ready for action (see Volume, page 13). Then select the required scenario.

*– The LED ring around the relevant programme button shows blue to confirm this.*

To end the scenario prematurely, press the programme button again. By using the temperature button, you can modify the temperature of the water by a maximum of  $\pm 3^{\circ}\text{C}$ , compared to the initial setting. The amount of water can be adjusted round an average value using the volume button. At the end of the scenario, RainSky E automatically switches on the ambient light.

*– The LED ring around the light button shows blue.*



## 5. Cold-water mist spray

The cold-water mist spray is switched on and off with this pushbutton.

*– The LED ring around the button lights up to confirm that the mist spray has been activated.*

The scenarios, rain modes and hand shower are then automatically switched off. The temperature and volume cannot be regulated.

A safety shutdown ensures that the cold-water mist spray is switched off automatically after 20 minutes.



## 6. Light

This light pushbutton switches on the white ambient light.

– *The LED ring around the light button is lit.*

During the scenarios, the colour and the intensity of the light varies automatically and once the scenario has been played out, it switches back to ambient light.

A safety shutdown ensures that the light switches off automatically after 60 minutes.



## 7. Hand shower

This pushbutton activates the hand shower. All the other functions are automatically switched off.

– *The LED ring around the button is lit.*

The water starts to flow without delay. The green LED over the volume button flashes until the set temperature is reached.

A safety shutdown ensures that the hand shower is switched off automatically after 20 minutes.

## Fragrance module

The fragrance module is supplied with three fragrance containers to match the three scenarios, Restart, Reload and Return. The fragrances are only released during the scenarios.

### Regulating the fragrance intensity

Keep the temperature button pressed and at the same time, press one of the programme buttons to test the intensity of the fragrance for the particular scenario and if necessary, make a personal adjustment. The fragrance module must be active in the scenario to test and personalise it. An average intensity is set at the factory.

*Press once for high intensity – LED ring flashes once*

*Press twice for average intensity – LED ring flashes twice*

*Press three times for low intensity – LED ring flashes three times*

*Press four times to turn off the fragrance – LED ring flashes four times*

### Changing the fragrance containers

Once the fragrance in the fragrance container is used up (for private use, this lasts about one year), the LED ring flashes for the particular scenario, prompting the replacement of the fragrance container. To do this, please proceed as shown in the drawing on the next page.

When all the functions are switched off, press the relevant scenario button four times within five seconds, so that the system stores the information that the fragrance container has been changed. This resets the elapsed time counter for the fragrance container to zero and the LED stops flashing.

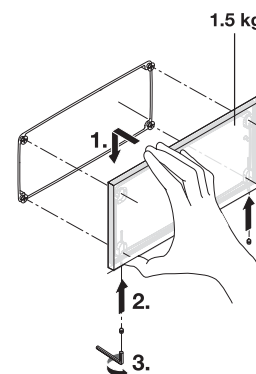
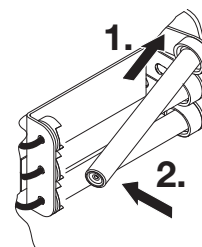
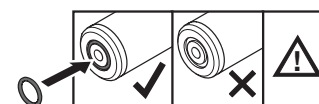
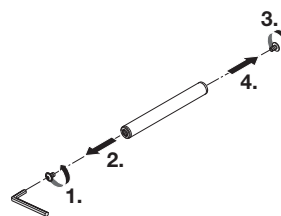
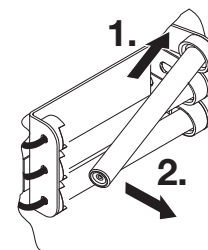
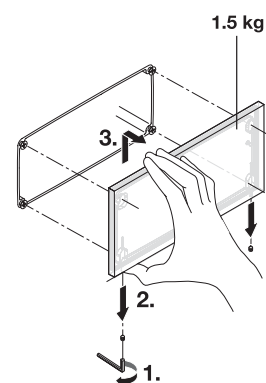
### Reordering the fragrance containers

You can obtain fragrance containers from your kitchen and bathroom specialists.

Restart article number: 12 401 979 90

Reload article number: 12 402 979 90

Return article number: 12 403 979 90



## Cleaning and care

We recommend using the Dornbracht D-Care set (art. no. 12 990 970 90) to clean and care for the galvanised finishes of polished chrome and platinum matt. We also recommend using a commercially available cleaning agent for the stainless steel cover plate. Care differs for the different RainSky E finishes, although in general, abrasive cleaning agents must not be used.

### **Electronic control and cover plate of the fragrance module (galvanised finishes)**

Do not use any cleaning products containing hydrochloric acid, formic acid, acetic acid or a chlorine bleach solution, as these could cause considerable damage with even one application.

When using a spray cleaner, never spray directly onto the surfaces, but onto the fabric being used for cleaning (cloth/sponge), as otherwise the spray mist can penetrate into the openings and gaps in the fitting and cause damage.

Galvanised surfaces should be regularly provided with a thin protective film. It is advisable to use a preservative that is specifically designed for use on galvanised surfaces.

#### *Note:*

*Residue from personal hygiene products such as liquid soap, shampoo and shower gel can also cause damage, so immediately after use, all fittings and accessories must be rinsed thoroughly with clean water to remove all residue.*

### **RainSky E cover plate (polished and brushed finish)**

A washing-up liquid solution is normally sufficient to remove slight marks (such as fingerprints) from the surface. Alternatively, you can treat the surface with a chloride-free glass cleaner. Subsequent polishing with a soft, dry cloth will ensure a fine finish.

For more stubborn marks, use a citric acid based cleaner or a chloride-free glass cleaner to dissolve scale. If heavily marked, the surface should be treated with a stainless steel cleaning agent.

### **You should generally refrain from using the following cleaning products:**

- *Products containing hydrochloric acid and acetic acid*
- *Cleaners containing soda or solvent*
- *Scouring powder*
- *Bleaching/silver cleaning agent*

### **RainSky E cover plate in a brushed finish**

With heavier marking, you can also use a liquid cleaning milk with water. It is important when cleaning for your movements to always follow the direction in which the material is brushed.

### **Cleaning jets**

If the scale deposits on the jets are light, simply wipe them over with your hand to clean them. If this does not suffice, enlist the aid of a nylon brush.

If the jets are badly encrusted, rub them with a cloth soaked in a citric acid cleaner (CLEAN from the D-Care set), leave to work for about five minutes and then rinse with clean water. If one application is not sufficient, the process can be repeated.

*You must also follow the general cleaning and care instructions for Dornbracht sanitary fittings and accessories. These can be found on the Internet at [www.dornbracht.com](http://www.dornbracht.com)*

## Maintenance

All repairs (apart from changing the fragrance containers) must only be performed by a professional plumber.

We recommend that your professional plumber checks and services your RainSky E at regular intervals.

As well as cleaning the jets and checking for leaks, this also checks the functional sequences. A maintenance contract with your professional plumber will ensure that the system is regularly checked.

### Safety circuit

There are independent safety circuits in the electronics to ensure that the water cannot escape at an undesirably high temperature (42° C scald protection). All openings are closed immediately and the RainSky E can no longer be operated. Once the water has cooled down, RainSky E is again ready for action. Should this situation occur repeatedly, please contact your plumber.

*– If the power fails, RainSky E shuts down automatically.*

## Faults

If RainSky E is not responding normally, proceed as follows:

*1. The blue and red LEDs do not light up:*

Please check the voltage supply.

*2. The blue and red LEDs light up, but the water does not flow:*

Please check the water feed pipes including the filters and the stop valves.

*3. The blue and red LEDs light up, the water flows, but RainSky E is not working normally:*

Please contact your plumber.

*4. RainSky E shuts down during the draining phase:*

The initial temperature could not be achieved within the two-minute maximum.

Please contact your plumber.

## LED signals

The LEDs on the various buttons and pushbuttons provide helpful guidance and information.

Red and blue LEDs (temperature button)

– *Red and blue LEDs are permanently lit*  
= *stand-by mode*

– *Blue LED is off, red LED is flashing*

= *warning signal that scald protection has been manually lifted, to allow the temperature to increase to over 42° C*

Green LED (volume button)

– *Green LED is off in stand-by mode*

= *The hot water in the pipe has cooled down, RainSky E is not ready for action*

– *Green LED is flashing*

= *the initial temperature of 38° C has not yet been reached*

– *Green LED is permanently lit*

= *the initial temperature of 38° C has been reached, RainSky E is ready for action*